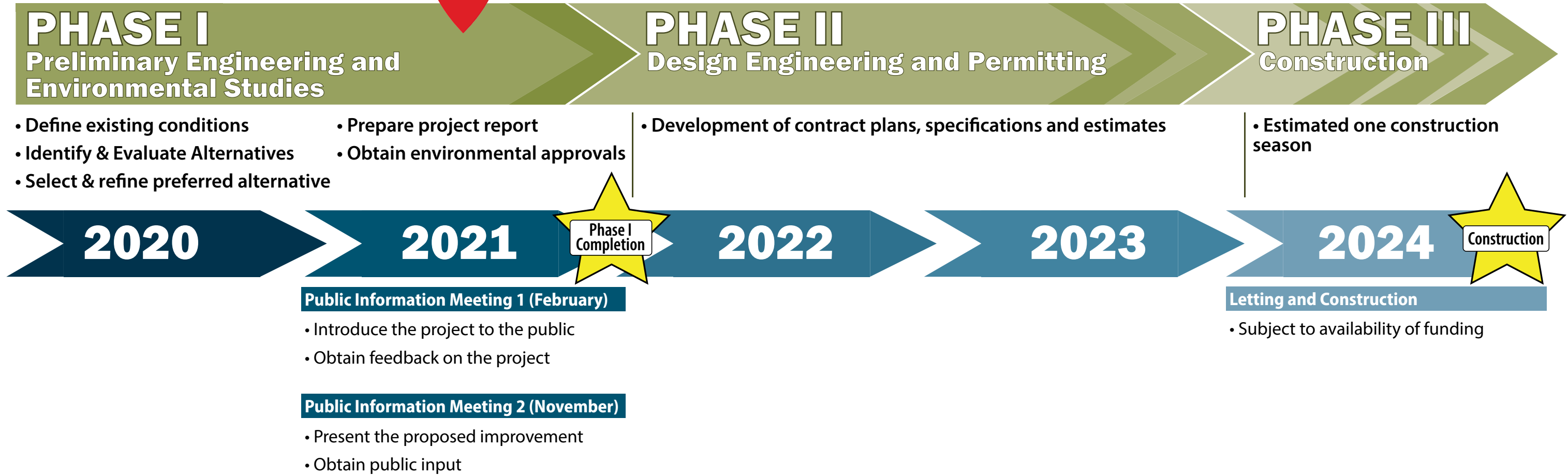


PROJECT SCHEDULE

ILLINOIS ROUTE 59 BRIDGE AND TRAIL IMPROVEMENTS



THE IL-59 BRIDGE + BIKE TRAIL PROJECT

VILLAGE OF STREAMWOOD

November 9, 2021



COMMUNITY POLL | WHAT WE HEARD (1 of 2)



The poll was open for **23** days, between February 18 and March 12, 2021.

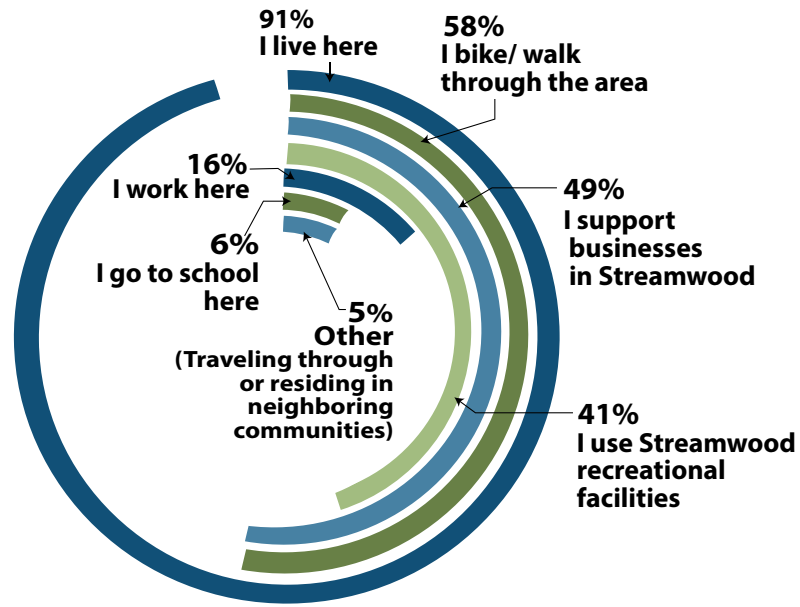


251 people participated in the poll.

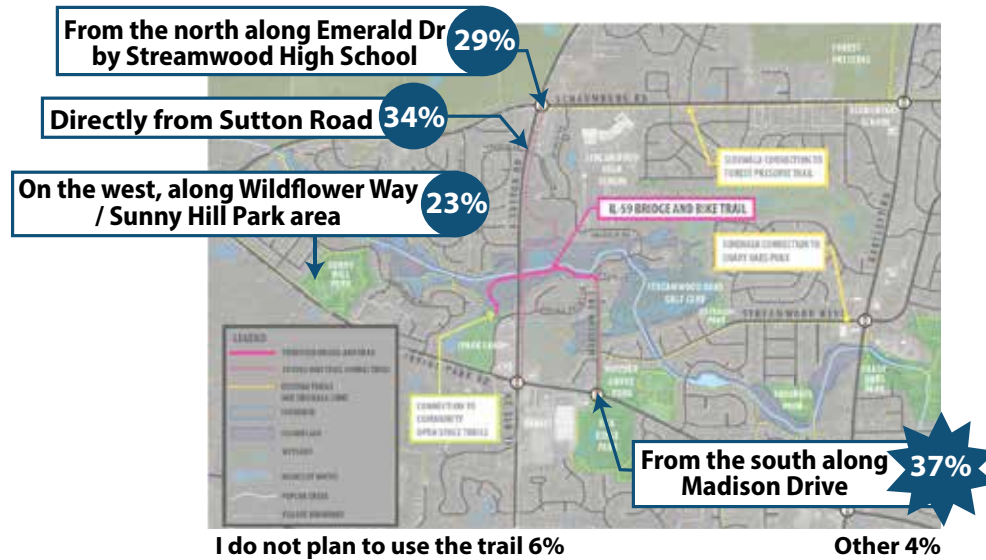


220 original comments were provided.

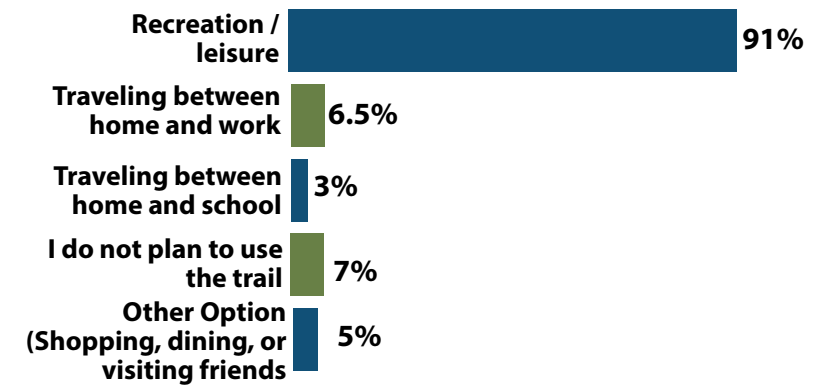
How you are connected to Streamwood?



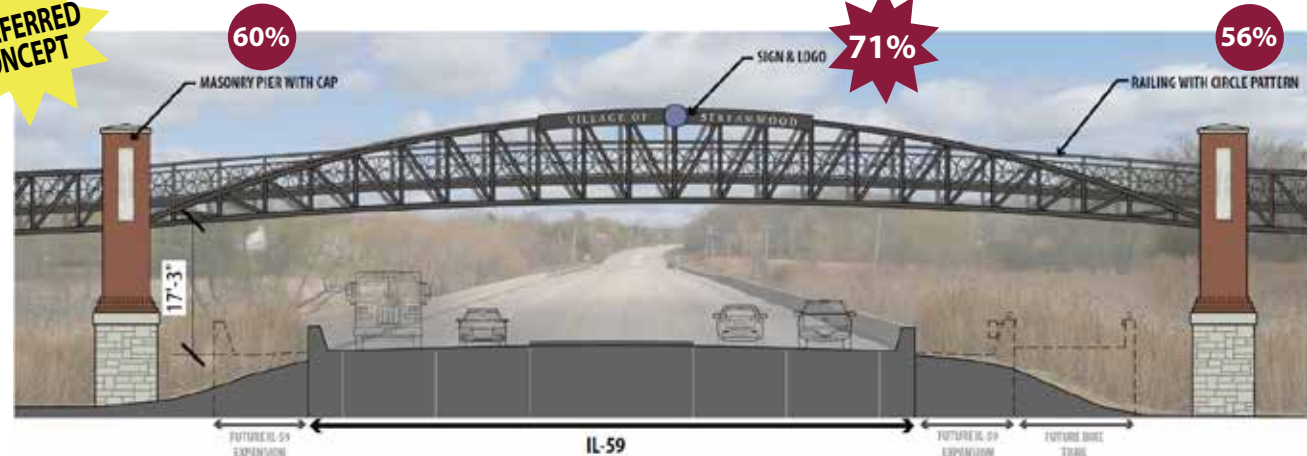
Based on the trail and bike bridge locations shown on the map, which direction would you use most often to get to the trail?



How do you anticipate using the trail?

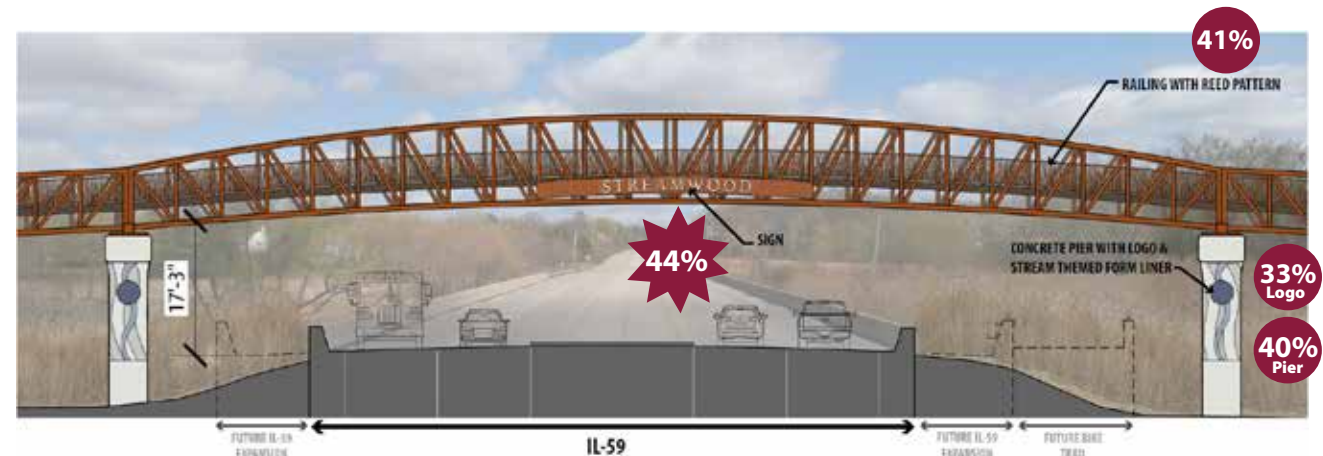


Bridge Concept #1 depicts a truss bridge. Based on this concept, please select your top features.



None are appealing to me 5%

Bridge Concept #2 depicts a truss bridge. Based on this concept, please select your top features.



None are appealing to me 21%

THE IL-59 BRIDGE + BIKE TRAIL PROJECT

VILLAGE OF STREAMWOOD

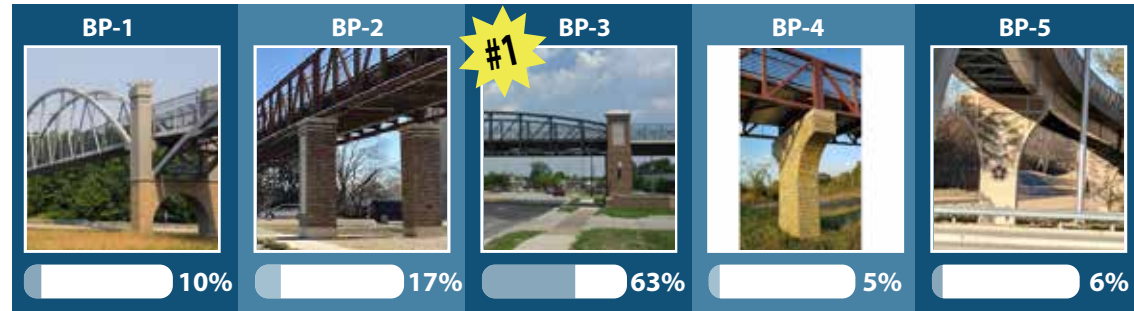
November 9, 2021



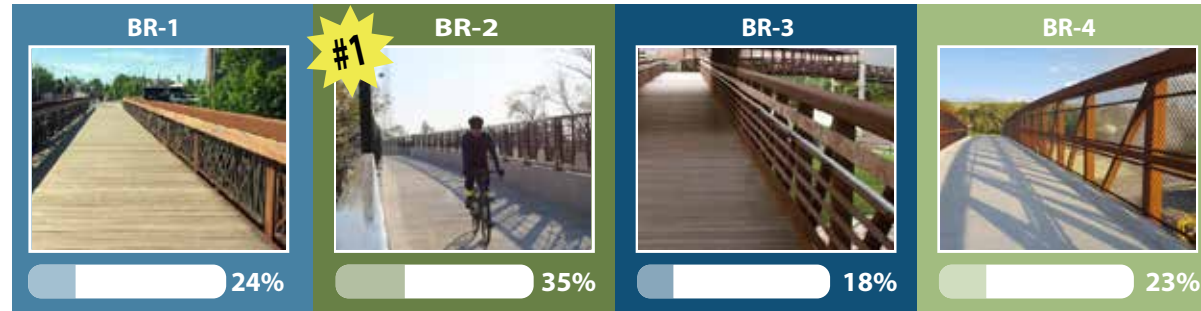
COMMUNITY POLL | WHAT WE HEARD (2 of 2)

BRIDGE FEATURES

Based on these bridge piers examples, please select the photo that is your preferred treatment for bridge piers.

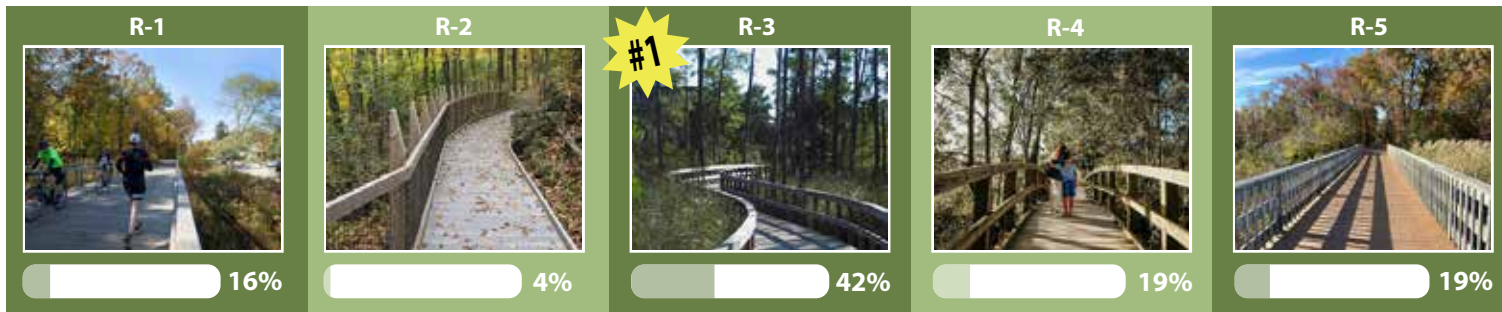


Based on these bridge railings examples, please select the photo that is your preferred treatment for bridge railings.

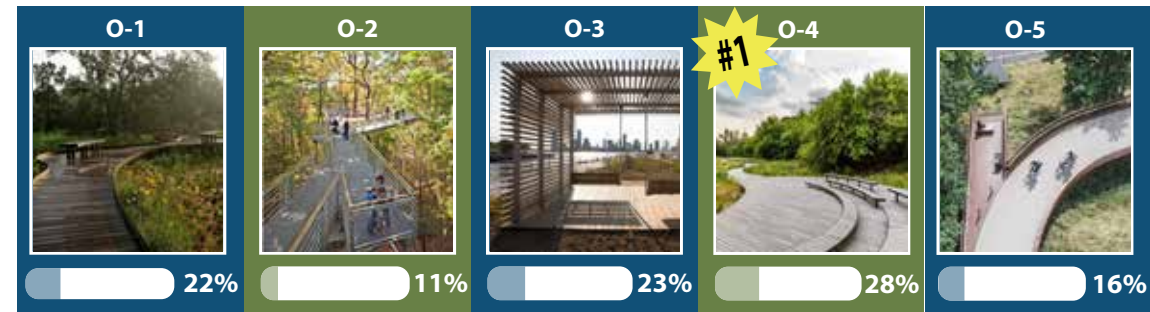


BOARDWALK FEATURES

Based on these trail railings examples, please select the photo that is your preferred treatment for trail railings.



Based on these seating and overlook example photos, please select the photo that is your preferred treatment for seating and lookout areas.



COMMENTS AND CONCERNS

A summary of concerns follows below:

- **Project costs.** Although grant funding would be applied to construct this bridge and trail, some expressed concerns that residents would be expected to contribute to the upfront and/or long-term maintenance costs related to the bridge and trail.
- **Project uses.** While many folks would like to see these areas better connected, some were concerned about potential inappropriate uses of the trail and bridge facilities, such as vandalism and loitering.
- **Maintenance concerns.** Some expressed concerns about long term maintenance costs of the bridge and trail, given Village staff's other maintenance commitments.

A summary of comments follows below:

- **Safety first!** Above all else, the safety and security of the bridge and trail users (as well as nearby drivers) are paramount and should guide the project development.
- **Plan for Long Term Sustainability and Maintenance.** Develop the bridge and trail project with special considerations for our region's climate and Village maintenance practices. Consider low maintenance material options, such as weathering steel, stained concrete, and composite wood materials.
- **Project support.** A safe way to cross IL-59 is much needed for families and individuals who live throughout the area and wish to safely bike or walk to nearby shopping, dining, schools, neighborhoods, and surrounding trails.
- **Project funding and timing.** There were some questions about project funding and timing. This project is currently in early planning phases and is being prepared to apply for federal funding. Project planning is expected to be complete by the end of 2021. Following this planning phase, the Village will be seeking funding to prepare construction documents and to construct the bridge and trail. Without having a funding source in place, a construction schedule cannot be determined at this time. That said, we are encouraged by the community's strong interest in this project and are hopeful that this will help the Village obtain funding.

- **Provide connectivity to surrounding destinations and Forest Preserve Trails.** Consider future connections to other destinations and trails such as: Coordinate with the Forest Preserves to connect to trails near Schaumburg and IL-59; Coordinate with Elgin to connect to the Fox River Path; extend proposed trails along IL-59 to Bode Road; develop a bridge from Poplar Creek parking lot to the Library; Improve the sidewalk from IL-59 and Streamwood to Bartlett; Improve the intersection at Schaumburg and Sutton Roads.
- **Add lighting to the bridge.** Incorporate appropriate lighting at the bridge for visibility and safety.
- **Incorporate signage.** Wayfinding signage was noted as an important feature to promote linkages to and from key destinations.
- **Consider dog stations, parking, vending and bathrooms along the trail.** There were some requests for additional trail amenities. While the anticipated funding sources may not be able to fund all requested amenities, this project offers opportunities to partner with other stakeholders to potentially coordinate improvements. Potential partnerships could include the Park District, community and student groups, Eagle Scouts, etc.
- **Limit truck traffic.** While truck traffic is not included in the project scope, the poll received several comments that request limiting truck traffic along Schaumburg Road, west of IL-59.

THE IL-59 BRIDGE + BIKE TRAIL PROJECT

VILLAGE OF STREAMWOOD
November 9, 2021



VILLAGE OF STREAMWOOD | CHARACTER + IDENTITY

Hoosier Grove Barn

image credit: Streamwood Park District



Hoosier Grove Museum

image credit: Streamwood Park District



Village Hall

image credit: Village of Streamwood



Police Department

image credit: Village of Streamwood



Veterans Memorial

image credit: Village of Streamwood



Arthur L. Janura Preserve

image credit: Forest Preserves of Cook County



Village Hall

image credit: Village of Streamwood



THE IL-59 BRIDGE + BIKE TRAIL PROJECT

VILLAGE OF STREAMWOOD

November 9, 2021



VILLAGE OF STREAMWOOD | COMPREHENSIVE PLAN

Irving & Sutton Sub-area OPPORTUNITIES

Following projects are recommended for the sub-area, as shown on Map and discussed in detail below:

1. New trail along Poplar Creek
2. New trail bridge across IL 59
3. Future Park District campus
4. Potential restaurant site at Park District campus entrance
5. Pedestrian connection to Park District campus
6. Potential commercial uses along Irving Park Road
7. Potential new multi-family or senior housing
8. Trail/sidewalk connections
9. Improved intersection for pedestrians and bicyclists
10. Better utilization of outlots along IL 59

NEW TRAIL ALONG POPLAR CREEK

A new trail along Poplar Creek is an important connection in the overall village trail system, helping to achieve the goal of linking the village neighborhoods and destinations. Trails already exist on the west side of IL 59 near the creek. With the inclusion of a bridge across IL 59, the trail would connect the neighborhoods to the west with the open spaces and neighborhoods on the east side of IL 59.

NEW TRAIL BRIDGE ACROSS IL 59

A new trail bridge over IL 59 Sutton Road would connect existing trail on the west side of IL 59 with the new proposed trail



Excerpts from the Village of Streamwood Comprehensive Plan
As part of the Phase 1 study, a new bridge alignment over IL-59 is proposed.



Over 350 acres of parks, natural areas and open spaces for a community committed to the stewardship of natural resources



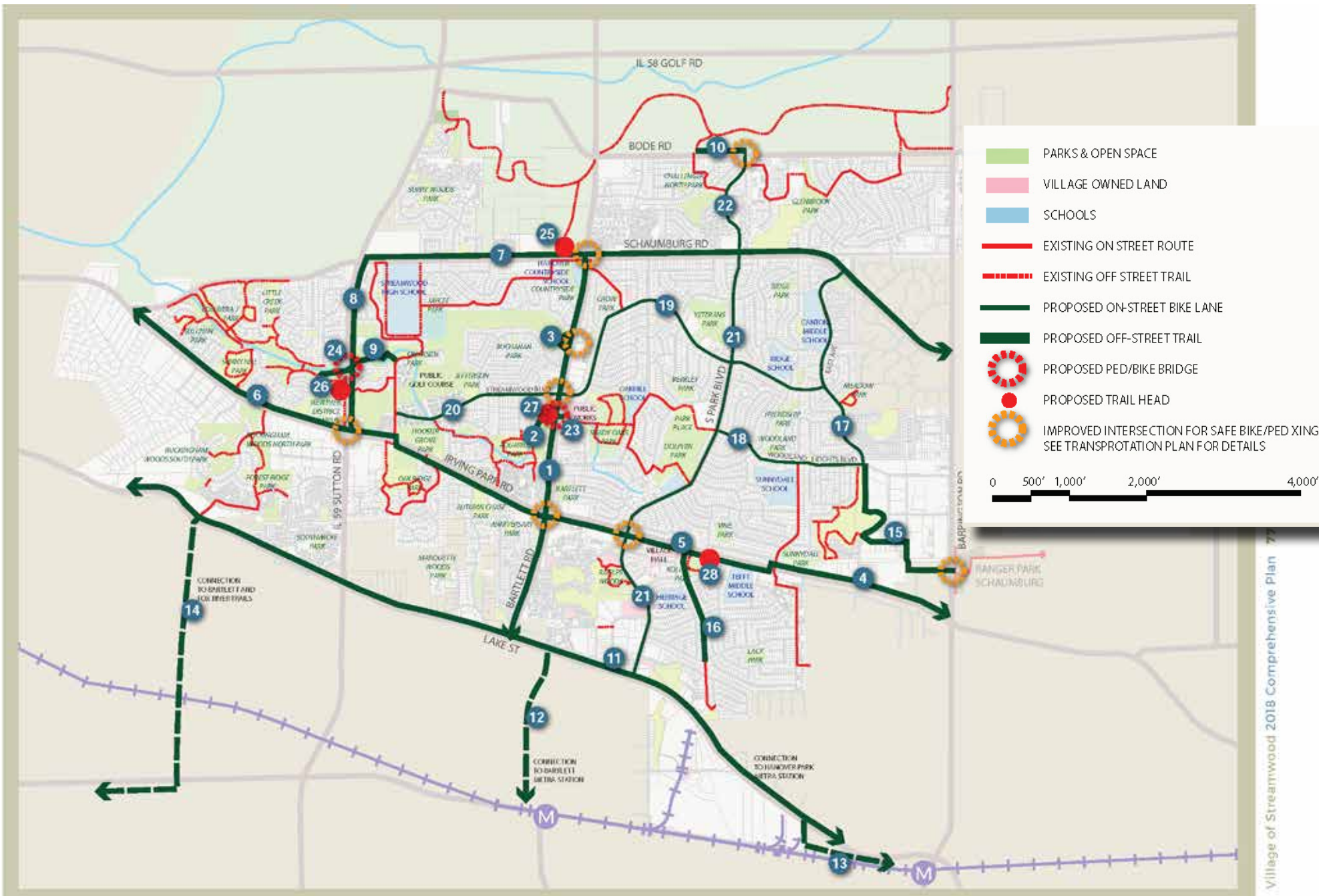
THE IL-59 BRIDGE + BIKE TRAIL PROJECT

VILLAGE OF STREAMWOOD

November 9, 2021



COMPREHENSIVE LIST OF PROPOSED TRAILS



OFF STREET TRAILS

- Trail along Bartlett Road, Schaumburg Road to Lake Street
- Trail along Poplar Creek near Bartlett Road to connect Aquarius Park and Shady Oaks Park
- Trail around tree grove at Bartlett Road and Cypress Drive intersection
- Trail along north side of Irving Park Road, Barrington Road to Sunnyside Boulevard
- Trail along south side of Irving Park Road, Sunnyside Boulevard to Madison Avenue
- Trail along north side of Irving Park Road, Madison Avenue to Schaumburg Road
- Trail along Schaumburg Road, IL 59, Sutton Road to Barrington Road
- Trail along Sutton Road connecting Irving Park Road and Schaumburg Road
- Trail section along Poplar Creek connecting existing trails west of IL 59, Sutton Road to Madison Avenue and the existing on street route to Streamwood High School, with small bridge over Poplar Creek
- Trail along Bode Road, N Park Boulevard to Forest Preserve Trail
- Continuous trail along Lake Street, needs coordination with I.D.O.T and neighboring municipalities
- Trail connecting to Bartlett Metra Station, needs coordination with Village of Bartlett
- Trail connection from Lake Street Trail to Hanover Park Metra Station, needs coordination with Village of Hanover Park
- Trail on Naperville Road connecting Lake St. and W Bartlett Road and the Bartlett Trail, needs coordination with neighboring municipalities and the County
- Trail following Phoenix Lake Avenue to East Avenue to Yorkshire Drive to Frances Drive to Tower Drive to Barrington Road and Tower Drive intersection which can connect to Schaumburg trail system
- Trail along Pipeline property to connect to existing off street trail south of Lacy Avenue

ON STREET BIKE LANES/SHARED LANE

- East Avenue, Woodland Heights Boulevard to Schaumburg Road
- Woodland Heights Boulevard, S Park Boulevard to East Avenue
- East Streamwood Boulevard, East Avenue to Bartlett Road
- West Streamwood Avenue, Bartlett Road to Madison Avenue
- S Park Boulevard, Lake Street to Schaumburg Road
- N Park Boulevard, Schaumburg Road to Bode Road

PEDESTRIAN AND BIKE BRIDGES

- Pedestrian and bike bridge across Bartlett Road at Poplar Creek
- Pedestrian and bike bridge across IL 59, Sutton Road at Poplar Creek

TRAILS HEADS

- Schaumburg Road and Bartlett Road intersection
- IL 59, Sutton Road and Prairie Point Lane
- West side of Bartlett Road at proposed Poplar Creek trail connection
- Irving Park Road along proposed Irving Park Road Trail at Kollar Park

INTERSECTION IMPROVEMENTS

- (SEE TRANSPORTATION FRAMEWORK PLAN)
- Improve intersection to create safe pedestrian and bike crossings. Improvements could include:
 - New traffic signals
 - New pedestrian signal
 - Pedestrian countdown timer
 - Enhanced crosswalks
 - New crosswalks
 - Lighting

PLAN FOR A CONNECTED SYSTEM OF TRAILS

Excerpts from the Village of Streamwood Comprehensive Plan

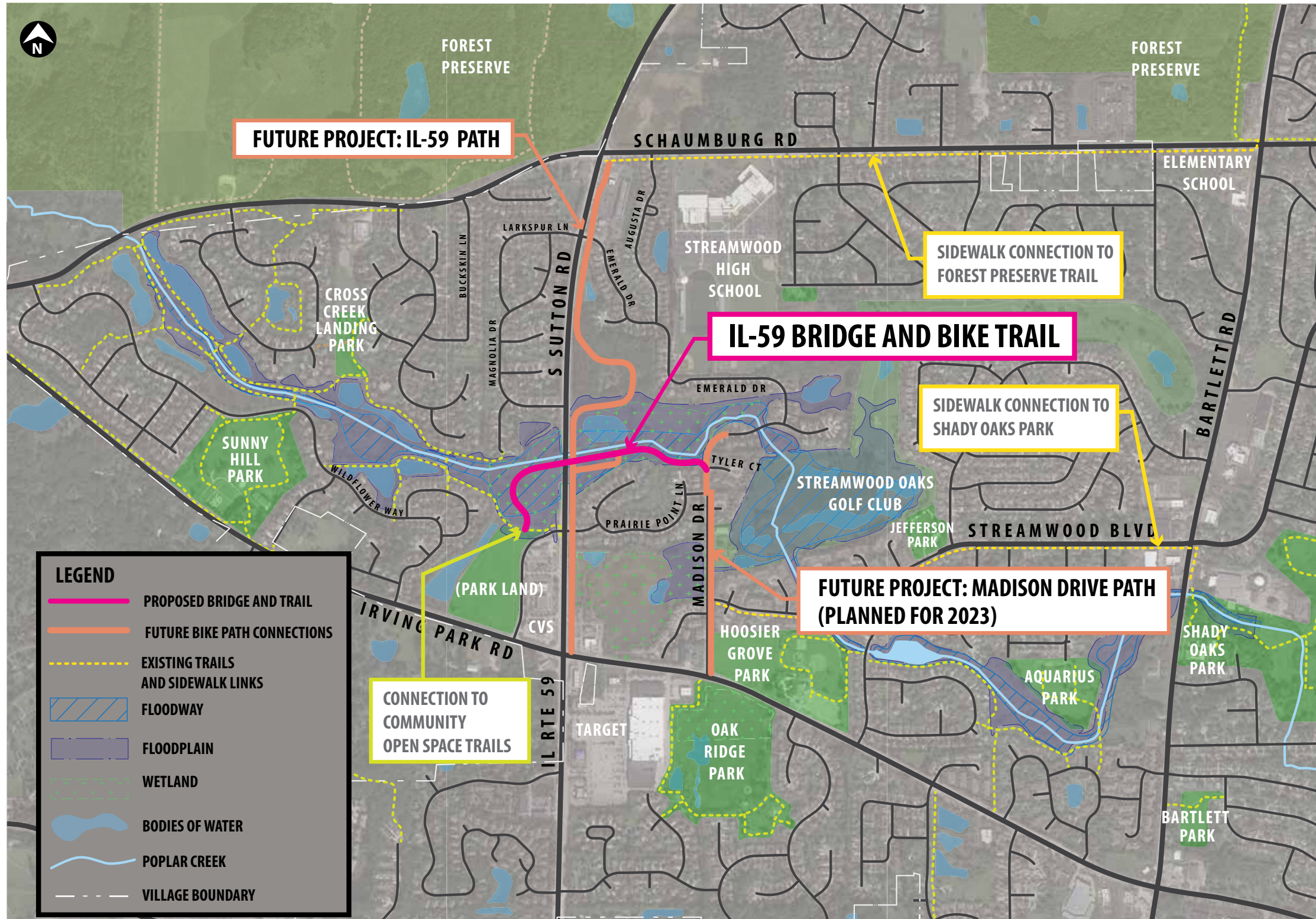
THE IL-59 BRIDGE + BIKE TRAIL PROJECT

VILLAGE OF STREAMWOOD

November 9, 2021



VILLAGE OF STREAMWOOD | TRAILS + CONNECTIVITY



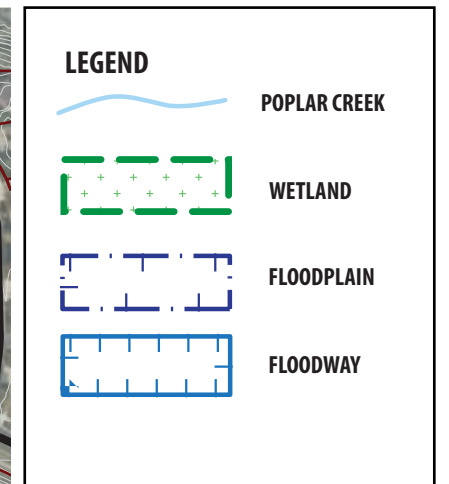
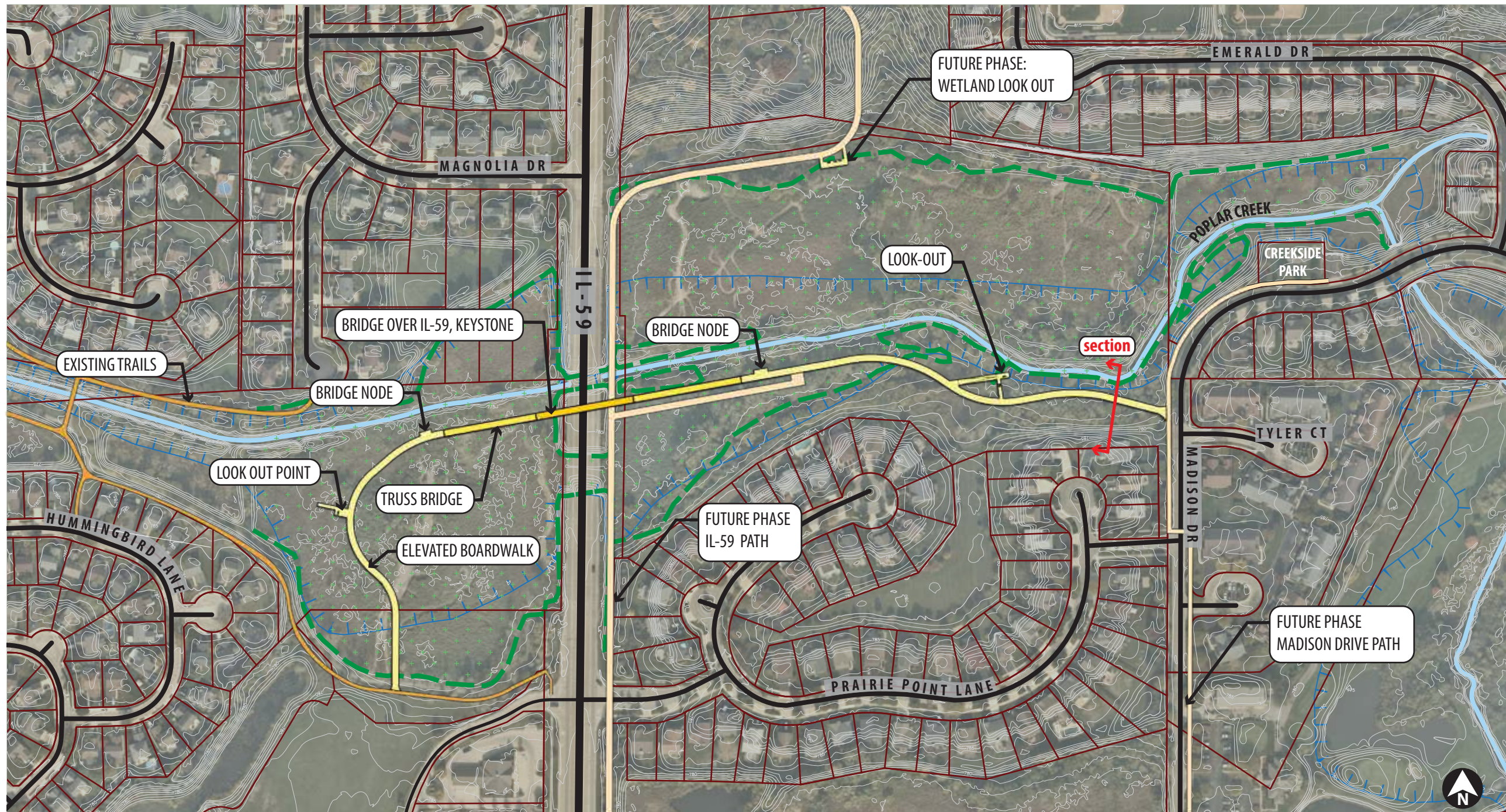
THE IL-59 BRIDGE + BIKE TRAIL PROJECT

VILLAGE OF STREAMWOOD

November 9, 2021



PREFERRED TRAIL ALIGNMENT CONCEPT



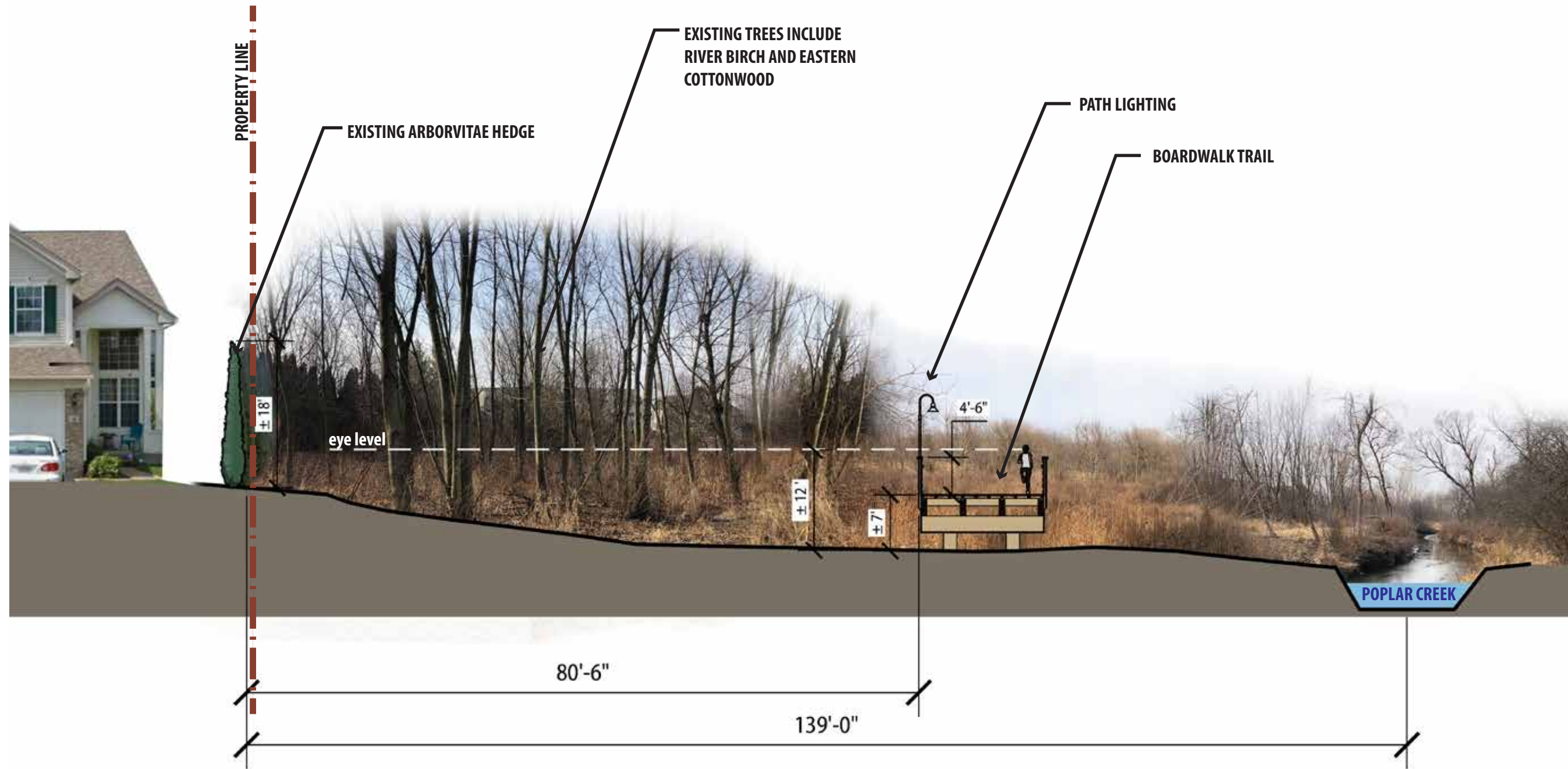
THE IL-59 BRIDGE + BIKE TRAIL PROJECT

VILLAGE OF STREAMWOOD

November 9, 2021



PREFERRED BOARDWALK SECTION



THE IL-59 BRIDGE + BIKE TRAIL PROJECT

VILLAGE OF STREAMWOOD

November 9, 2021



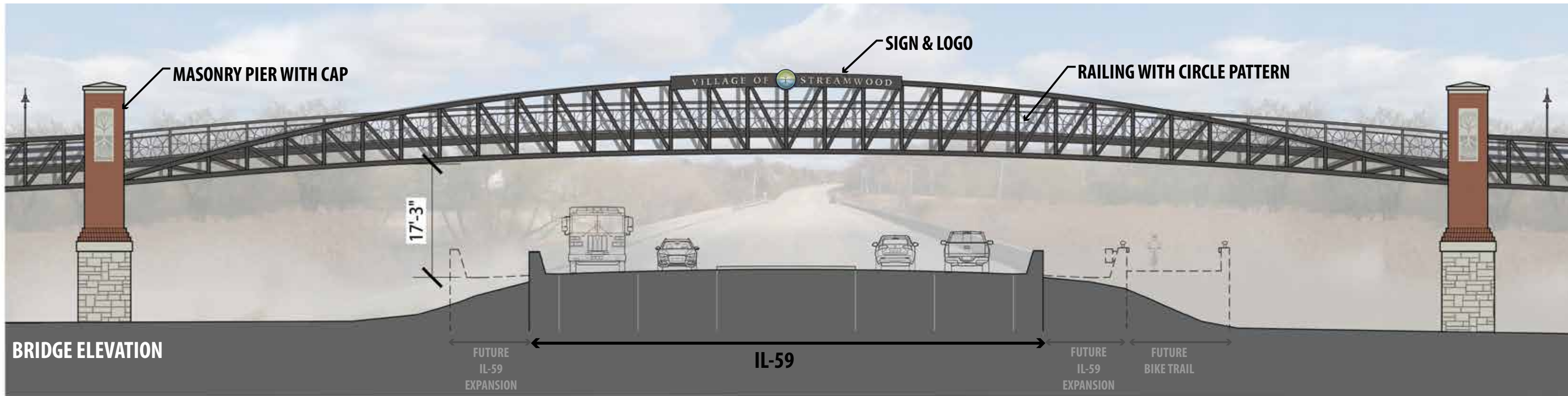
PREFERRED BRIDGE CONCEPT



VILLAGE SIGN AND LOGO



PIER DETAIL
Village logo reference



BRIDGE ELEVATION

THE IL-59 BRIDGE + BIKE TRAIL PROJECT

VILLAGE OF STREAMWOOD

November 9, 2021

PREFERRED BRIDGE CONCEPT IMAGERY

STEEL TRUSS WITH SIGNAGE AND MASONRY PIERS



PLANNING PRINCIPLES

- Provide an attractive gateway for Streamwood that incorporates high quality metal and masonry materials.
- Prioritize pedestrian and bicycle accessibility, visibility, and safety. Bridge deck surface to be non-slip concrete.

THE IL-59 BRIDGE + BIKE TRAIL PROJECT

VILLAGE OF STREAMWOOD

November 9, 2021

PREFERRED BOARDWALK CONCEPT IMAGERY

BOARDWALK WITH OVERLOOKS, RAILINGS, AND LIGHTING

PLANNING PRINCIPLES

- Provide an accessible, elevated multi-use trail that minimizes wetland impacts and offers a quiet backdrop to the creek and landscape.
- Prioritize durability and maintenance. Trail surface to be non-slip concrete.
- Select lighting products that meet Dark Skies initiatives.



THE IL-59 BRIDGE + BIKE TRAIL PROJECT

VILLAGE OF STREAMWOOD

November 9, 2021



BOARDWALK TRAIL FEATURE OPTIONS | TRAIL IDENTITY, WILDLIFE HABITAT + INTERPRETATION

PLANNING PRINCIPLES

After bridge and trail construction, enhance the trail experience with environmental and interpretive features, such as:

- Wayfinding signs + trail identity
- Interpretive signs
- Weather stations
- Bat, bird + bee houses
- Native landscaping



THE IL-59 BRIDGE + BIKE TRAIL PROJECT

VILLAGE OF STREAMWOOD

November 9, 2021